

## OIE and Prevention and Control of Animal Disease

Madrid, 12 July 2010

Dr Kazuaki Miyagishima



## Content

1. Overview of the OIE
2. International Standards
3. List of Notifiable Diseases
4. Official Recognition of Disease Status
5. Reference Laboratories and Collaborating Centres

2



## Overview

3



## What is OIE ?

... it is an intergovernmental organisation



**1924** Office international des Epizooties

**2003** World Organisation for Animal Health

**176** Members

Headquarters: Paris (France)

=> **5** Regional Representations

=> **6** Sub-Regional Representations

4



## Key Missions

- Ensure **transparency** of the global animal diseases situation including zoonoses
- Collect, analyse and disseminate veterinary **scientific information and knowledge**
- **Provide expertise** and encourage international solidarity on disease control

5

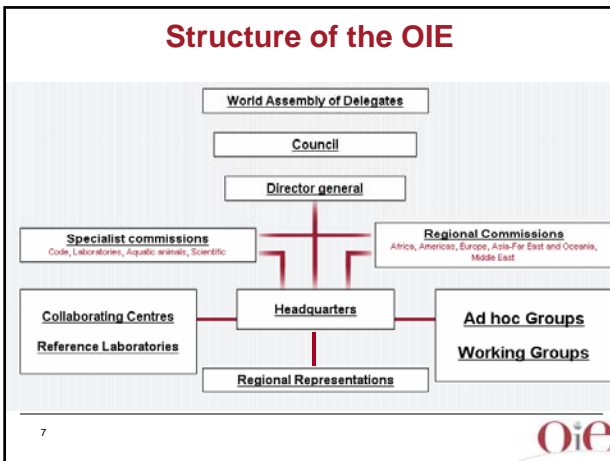


## Key Missions (contd)

- Within its mandate under the WTO SPS Agreement, to safeguard world trade by publishing **sanitary standards for international trade** in animals and animal products
- To improve the **legal framework** and resources of national **Veterinary Services**
- To better guarantee the **safety of food** of animal origin and to promote **animal welfare** through a science-based approach

6





### OIE 5TH Strategic Plan 2011/2015

- Adopted in **May 2010**
- Global mandate extended to the “**improvement of animal health, veterinary public health and animal welfare world-wide**”
- In this plan, it is mentioned that “OIE will concentrate on actions that support **food security** through the reduction of disease in **food producing animals**”.

8

## International Standards

9

### OIE’s International Standards

- Health standards for the prevention and control of animal diseases as well as for the safe trade of animals and animals products (specific mandate under the SPS Agreement of the WTO)
- Standards / guidelines for diagnostic tests and vaccines as well as for veterinary laboratories
- Standards / guidelines for animal production food safety and to promote science-based animal welfare

10

### OIE’s international standards

- Terrestrial Animal Health Code – mammals, birds and bees**
- Aquatic Animal Health Code – fish, molluscs and crustaceans**
- Manual of Diagnostic Tests and Vaccines for Terrestrial Animals**
- Manual of Diagnostic Tests for Aquatic Animals**
- OIE Quality Standard and Guidelines for Veterinary Laboratories: Infectious Diseases**

<sup>1</sup> Codes and Manuals available on the OIE website



## Process for setting and updating OIE Standards

In summary:

Standards developed using a science-based approach

The elected Specialist Commissions, with help from experts, have the task of formulating proposals following a transparent process

The Delegates decide whether or not to adopt the proposed texts (Democratic system)

13



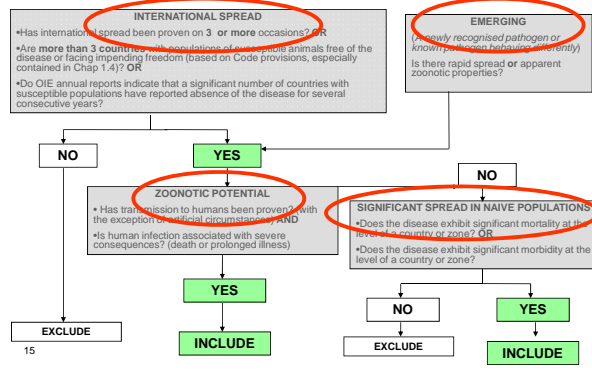
## OIE's List of Animal Diseases

14



## OIE's List of Diseases

### DECISION TREE : TERRESTRIAL ANIMAL DISEASES



15

## Swine Diseases notifiable to the OIE

- African swine fever
- Classical swine fever
- Nipah virus encephalitis
- Porcine cysticercosis
- Porcine reproductive and respiratory syndrome
- Swine vesicular disease
- Transmissible gastroenteritis

16



## Multiple-species Notifiable Diseases

- Anthrax
- Aujeszky's disease
- Brucellosis
- Crimean Congo haemorrhagic fever
- Foot and mouth disease
- Leptospirosis
- New world screwworm
- Old world screwworm
- Rabies
- Surra (Trypanosoma evansi)
- Trichinellosis
- Tularemia
- Vesicular stomatitis

17



## Official Disease Status

18



### Official Disease Status

- Objective Assessment against the OIE Code
- Tool for disease management (control pathway)
- Facilitation of trade in animals and commodities
- Confidentiality of dossiers
- Kept under review permanently (notification, expert mission)

19



### Official Disease Status

- Foot and Mouth Disease (FMD)
- Rinderpest
- Bovine Spongiform Encephalitis
- Contagious bovine pleuropneumonia (CBPP)

20



### Official Disease Status

- 1) Applicant country submits a dossier
- 2) Ad Hoc Group on country status examines the dossier
  - Queries to applicant
  - Additional information from applicant
  - Visit of expert mission to applicant country (if necessary)
- 3) OIE Scientific Commission endorses recommendations of the ad hoc Group
- 4) Scientific Commission circulates recommendations to OIE Members for comments
- 5) World Assembly of Delegates adopts list of free countries/zones

21



### Foot and Mouth Disease (FMD)

- FMD free country where vaccination is not practised
- FMD free country where vaccination is practised
- FMD free zone where vaccination is not practised
- FMD free zone where vaccination is practised

22



### OIE Reference Laboratories and Collaborating Centres

23

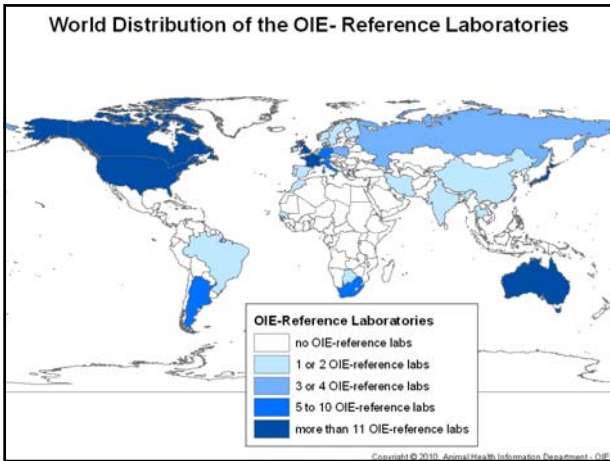


### OIE Reference Laboratories and Experts

- Must fulfil the role of centres of expertise and standardisation of methodology in their particular disease
- Centres for data processing, standardisation of diagnostic protocols, preparation and distribution of reference reagents, research, technical consultation and training
- The Expert should be a leading and active researcher

24

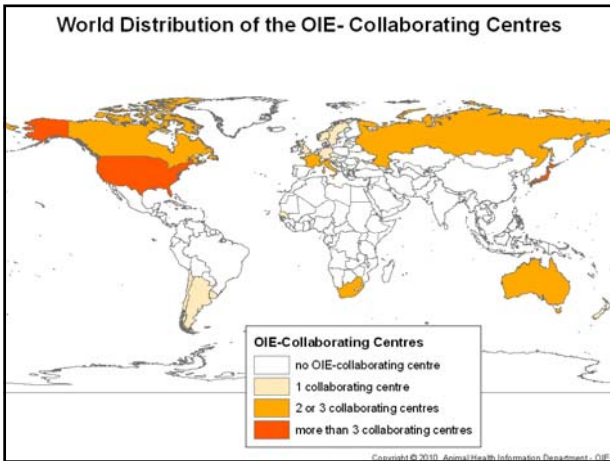




### OIE Collaborating Centres

- Cover a specialised sphere of activities rather than a given animal disease
- Activities are global in coverage
- A large part of their work is of particular help to developing countries
- Not necessarily laboratory based


26 



### Number of OIE RLs and CCs (June 2010)


	Reference Laboratories	Collaborating Centres	Total
Number	190	37	227
Countries	36	21	41*
Diseases or Topics	101	35	136
Experts	163	37	198

*\*Countries hosting both labs and Centres are not counted twice*

28 

### OIE RLs and CCs in Asia and Oceania

Country	Number of Reference Laboratories	Number of Collaborating Centres
Australia	11	3 (2 + 1 shared with New Zealand)
China (PR of)	1	—
Chinese Taipei	3	—
India	2	—
Japan	13	4
Korea (Rep. of)	2	—
New Zealand	—	1 (shared with Australia)
Thailand	2	—
<b>8 Countries</b>	<b>34 Laboratories</b>	<b>7 Centres</b>

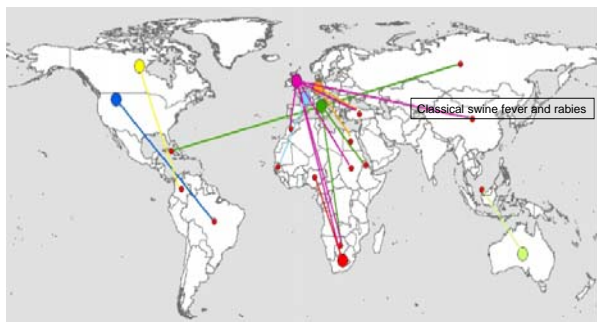
12/07/2010 29 

### Capacity building through OIE Laboratory Twinning

- Sustainable laboratory capacity building to create a better global distribution of laboratory capacity and expertise
- Is a link between an OIE Reference Laboratory or Collaborating Centre (Parent) and a National Laboratory (Candidate) for disease or topic
- To provide support for diseases and topics that are a priority in a region and improve geographical distribution of expertise
- Aims to improve expertise and diagnostic capacity to meet OIE standards
- Supports expertise but not laboratory equipment or construction of laboratory facilities

30 

### Twinning - Current status (May 2010)



31



### The OIE - a global partner in the promotion of animal health and food security

A collage of logos for various international organizations and programs. The logos include: offlu (Organisation for the Control and Prevention of Food-borne and Food-related Infections), OIE (World Organisation for Animal Health), FAO (Food and Agriculture Organization of the United Nations), WHO (World Health Organization), UNICEF (United Nations Children's Fund), GLEWS (Global Leadership in Emerging and Re-emerging Zoonoses), CODEX alimentarius (International Commission on International Food Standards), and GF-TADS (Global Food Traceability and Safety). The OIE logo is also present in the bottom right corner of the collage.

32

### Thank you for your attention



Organisation mondiale  
de la santé animale

World Organisation  
for Animal Health

Organización Mundial  
de Sanidad Animal

33

12 rue de Prony, 75017 Paris, France - [www.oie.int](http://www.oie.int) - [oie@oie.int](mailto:oie@oie.int)

